



WEARLINING & EPOXY

Anti-Abrasion - Cutwear B

* DESCRIPTION

100% Solid modified epoxy resin system containing anti-abrasion and anti-corrosion fillers giving outstanding protection against abrasion and corrosion. Brush-on or roll-on application. Typical applications include pump impellers, tanks, valves, pipes etc.

Coverage: 1.1 sqm @ 500 Micron per Kg

Anti-Abrasion - Cutwear S and (Diamond Lagging)

* DESCRIPTION

100% Solid modified epoxy resin system containing a variety of highly abrasion resistant fillers giving excellent abrasion resistance in many applications. Typical applications include chutes, launders, pumps cyclones, valves, pulleys etc.

Coverage: 1.1 sqm @ 300mm

Abrasion resistant Tile- Ceramic Alumina Tiling

* DESCRIPTION

Alumina ceramic tiles for abrasion resistant lining of chutes etc. Available in a variety of sizes 150 x 100 x 6; 13; 25; 50 N.B. Special sizes and castings can be supplied. Price on Application

Crusher Backing

* DESCRIPTION

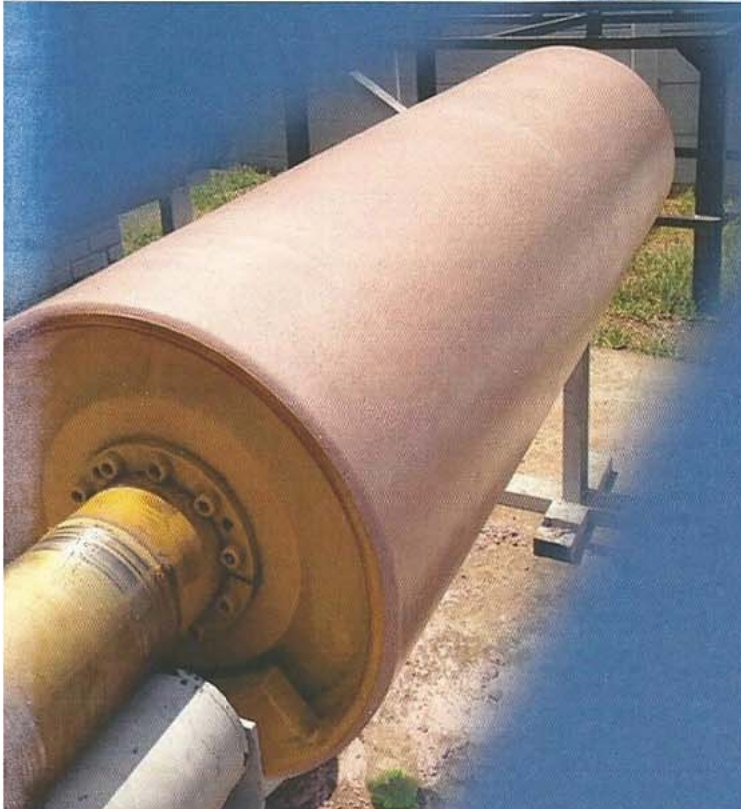
100% solids modified epoxy resin system with unique properties for this particular application. Exceptionally high compressive strength and the ability to cure in damp conditions make this a product which can be used in all crushing applications from tertiary to primary crushers. Relatively low S.G. means less kits are required.

Adhesives - Cutgrip

* DESCRIPTION

100% Solids modified epoxy resin system for most industrial bonding applications. Product has excellent adhesion and flexural strengths. Typical applications include bonding of abrasion resistant ceramic tiles.

Coverage: 7sqm @ 1mm



Metal Repair – Cutsteel

* DESCRIPTION

100% Solids modified epoxy resin system for repairing steel components. Ideal for rebuilding worn shafts, pumps, mill ends etc. Product is machineable.

Coverage: 7sqm @ 1mm

Metal Repair – Metal Stick

* DESCRIPTION

A rapid curing metal repair compound to repair leaking pipes, tanks, ducts etc. Cures under water.

Grouts – Cutgrout F.C

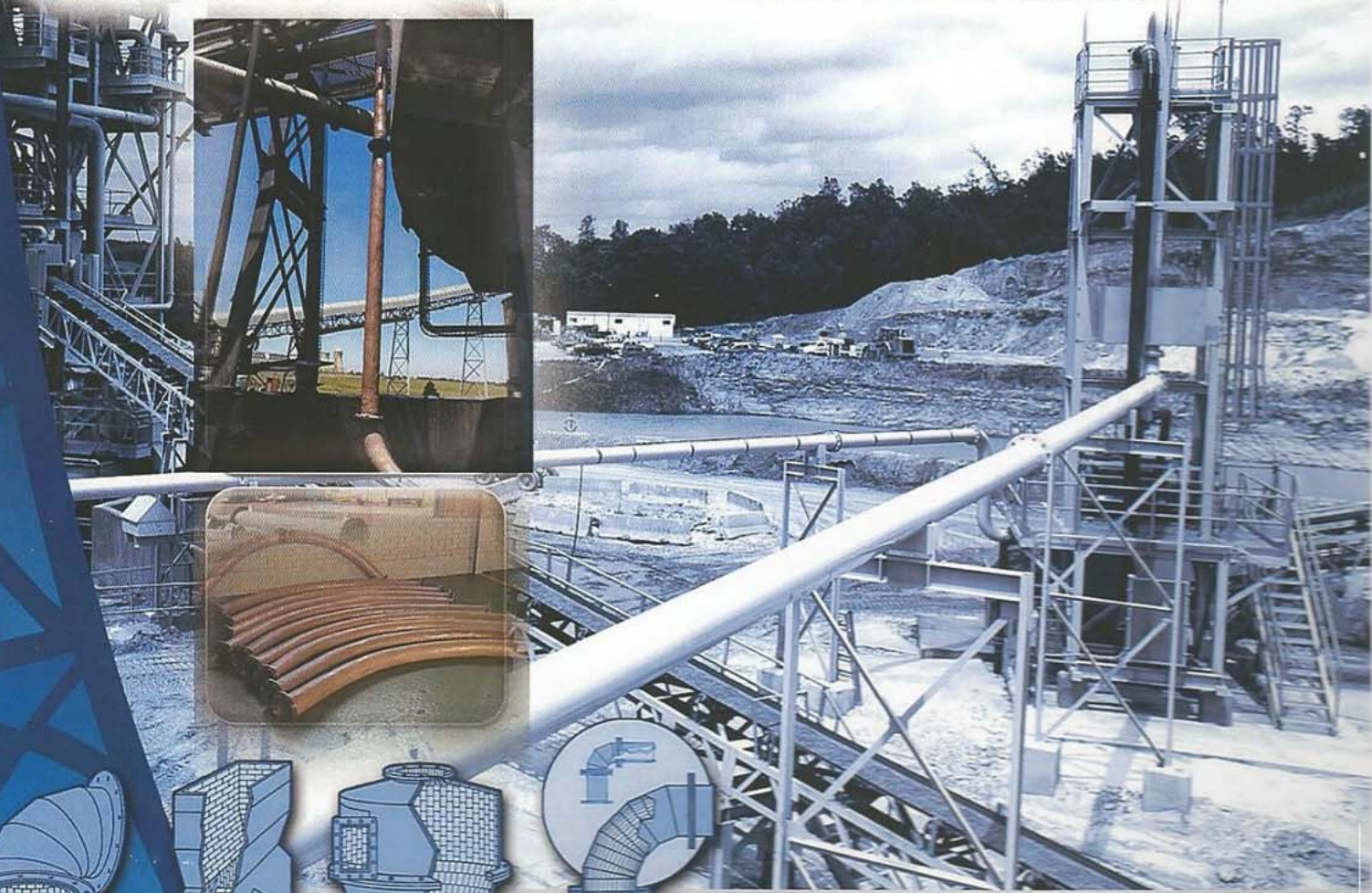
* DESCRIPTION

100% Solids modified epoxy resin system for grouting applications where a fast cure is required. Typical applications include grouting of anchor bolts etc. Cutgrout has excellent compressive and impact strengths.

Grouts – Cutgrout S.C

* DESCRIPTION

100% Solids modified epoxy resin system for large grouting application. Typical applications include grouting of generators compressors etc. Cutgrout S.C is chemical resistant and has very high compressive and impact strengths.



WEARLINING & EPOXY

JC PASTE

JC PASTE - JC101 TROWLABLE WEARING COMPOUND

* DESCRIPTION

JC PASTE - JC101 IS A 100% SOLIDS MODIFIED EPOXY RESIN SYSTEM CONTAINING SAPPHIRE HARD ALUMINA CERAMIC BEADS TO WITHSTAND SEVERE CAVITATION, TOUGH ABRASION AND MODERATE IMPACT.

* APPLICATION

JC PASTE - JC101 IS APPLIED TO THE PREPARED SURFACE WITH A TROWEL OR BY HAND AT THE REQUIRED THICKNESS, FROM 3MM UPWARDS, DEPENDING UPON THE APPLICATION.

* SURFACE PREPARATION

A PROPERLY PREPARED SURFACE IS IMPORTANT TO THE END RESULT AND LASTING DURABILITY OF JC PASTE - JC101. STEEL SURFACES SHOULD BE DRY GRIT BLASTED TO SA 2.5 WITH BLAST PROFILE BETWEEN 50-70 MICRONS TO LEAVE THE SURFACE FREE OF OIL AND GREASE CONTAMINATION. IN COLD CONDITIONS IT IS RECOMMENDED TO WARM THE SUBSTRATE TO 30-35°C.

* THEORETICAL COVERAGE

12KG KIT COVERS 1M² AT 6MM THICK NOT COMPACTED AND 4.2MM THICK - COMPACTED
KIT SIZE: 12KG

* TYPICAL APPLICATION

LINING OF:

- CONVEYOR PULLEYS
- PIPE BENDS
- SLURRY LINES
- PUMP CASING
- CYCLONES
- CHUTES, HOPPERS
- LAUNDERS AND FEEDER BOXES

JC PASTE - JC102 TROWLABLE WEARING COMPOUND

* DESCRIPTION

JC PASTE - JC102 IS A 100% SOLIDS MODIFIED EPOXY RESIN SYSTEM FORMULATED TO WITHSTAND SEVERE CAVITATION, TOUGH ABRASION AND MODERATE IMPACT.

* APPLICATION

JC PASTE - JC102 IS APPLIED TO THE PREPARED SURFACE WITH A TROWEL OR BY HAND AT THE REQUIRED THICKNESS, FROM 3MM UPWARDS, DEPENDING UPON THE APPLICATION.

* SURFACE PREPARATION

A PROPERLY PREPARED SURFACE IS IMPORTANT TO THE END RESULT AND LASTING DURABILITY OF JC PASTE - JC102. STEEL SURFACES SHOULD BE DRY GRIT BLASTED TO SA 2.5 WITH BLAST PROFILE BETWEEN 50-70 MICRONS TO LEAVE THE SURFACE FREE OF OIL AND GREASE CONTAMINATION. IN COLD CONDITIONS IT IS RECOMMENDED TO WARM THE SUBSTRATE TO 30-35°C.

* THEORETICAL COVERAGE

12KG KIT COVERS 1M² AT 6MM THICK NOT COMPACTED AND 4.1MM THICK - COMPACTED

* TYPICAL APPLICATION

LINING OF:

- CONVEYOR PULLEYS
- PIPE BENDS
- SLURRY LINES
- PUMP CASING
- CYCLONES
- CHUTES, HOPPERS
- LAUNDERS
- FEEDER BOXES ETC.



WEARLINING & EPOXY

JC PASTE - JC105 PIPE LINING EPOXY CERAMIC

• DESCRIPTION

JC PASTE - JC105 IS A 100% SOLIDS MODIFIED EPOXY RESIN SYSTEM PRIMARILY FORMULATED FOR PIPE LINING APPLICATIONS.

• APPLICATION

JC PASTE - JC105 IS A FLOWABLE EPOXY CERAMIC SPECIALLY DESIGNED TO BE APPLIED IN SLURRY LINES ETC. FROM A THICKNESS OF 6MM UPWARDS, DEPENDING UPON THE APPLICATION.
SIZES: FROM 500MM TO 9M LENGTHS AND/OR 150 DIAMETERS TO 1 DIAMETER.

• SURFACE PREPARATION

A PROPERLY PREPARED SURFACE IS IMPORTANT TO THE END RESULT AND LASTING DURABILITY OF JC PASTE - JC105. STEEL SURFACES SHOULD BE DRY GRIT BLASTED TO SA 2.5 WITH BLAST PROFILE BETWEEN 50-70 MICRONS TO LEAVE THE SURFACE FREE OF OIL AND GREASE CONTAMINATION. IN WET CONDITIONS IT IS RECOMMENDED TO WARM THE SUBSTRATE TO 30-35°C.

• TYPICAL APPLICATION

LINING OF:
O PIPE LINES
O SLURRY LINES

JC POXYBACK - JC301 CRUSHER BACKING MATERIAL

FOR LARGE, MEDIUM & SMALL CONE CRUSHERS AND GYRATORY CRUSHERS.

• DESCRIPTION

JC POXYBACK - JC301 IS A 100% SOLIDS MODIFIED EPOXY RESIN BACKING MATERIAL, ESPECIALLY FORMULATED FOR THE USE IN ALL TYPE OF CONE CRUSHERS, GRINDING MILLS, PRIMARY, GYRATORY CRUSHERS AND ANY OTHER HEAVY MACHINERY THAT REQUIRES BACKING MATERIAL.

JC POXYBACK - JC301 IS A NON-FLAMMABLE MATERIAL AND REQUIRES NO SPECIAL MIXING OR MELTING EQUIPMENT.

• APPLICATION

SEAL ALL CREVICES WITH PUTTY OR OTHER SUITABLE MATERIAL TO PREVENT BACKING MATERIAL FROM LEAKING OUT.

• MIXING

THE RESIN AND HARDENER MUST BE THOROUGHLY MIXED TOGETHER BEFORE APPLICATION BY USING A SLOW SPEED DRILL. MIXING CONTINUES UNTIL UNIFORM COLOUR IS OBTAINED. WITH AMBIENT TEMPERATURE AT 25°C A FULL KIT MUST BE POURED INTO PLACE DIRECTLY AFTER MIXING.

KIT SIZE: 10KG AND 20KG

